

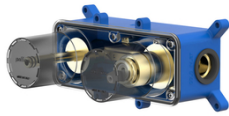
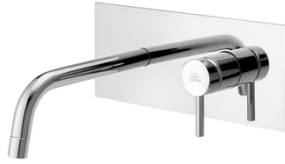
STICK

SK BOX105

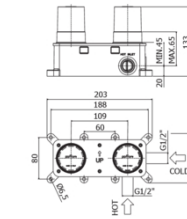
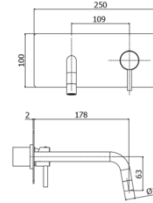


with spout and aerator M16x1 - l. 178mm

IMAGE



TECH DRAWING



DESCRIPTION

External set for concealed single lever basin mixer complete with:

- stainless steel wall plates 250x100mm
- 1/2" G connections
- **built-in box to be ordered separately (PBOX002)**

FINISHES



LINKS



FLOW RATE



SPARE PARTS



INSTRUCTION SHEET

ISO 14001
BUREAU VERITAS
Certification



ISO 45001
BUREAU VERITAS
Certification



ISO 9001
BUREAU VERITAS
Certification



Product, measurements and specifications shown are subject to change without notice.